

STAINLESS STEEL CLAMP



GENERAL APPLICATION

WSI Stainless Steel Band Clamps is an easy, fast and economic way to repair leakage or damage in under pressure water pipelines.

With Stainless Steel contraction will guarantee to protect from corrosion.

RD. 1200



GENERAL FEATURES

- Band** : AISI 304 Stainless Steel with 0.8 mm thickness
AISI 316 Available upon request
- Bolts and Nut** : AISI 304 Stainless Steel
- Lugs, Lifterbar** : Welded, AISI 304 Stainless Steel
- Gasket** : The tapered gasket has an EPDM waffle pattern design

RD. 1200 D



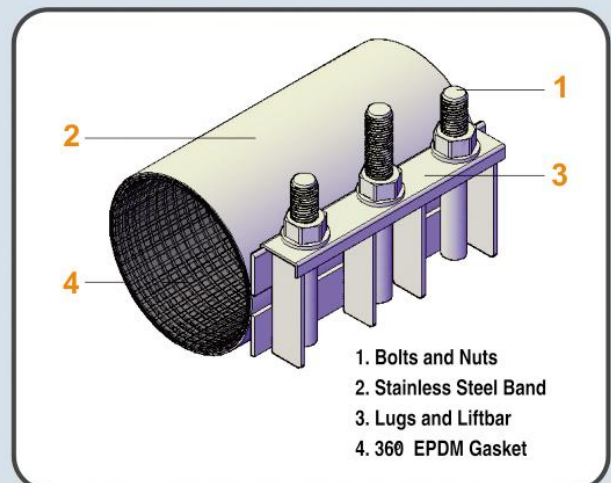
GENERAL FEATURES

- Band** : AISI 304 Stainless Steel with 0.8 mm thickness
AISI 316 Available upon request
- Bolts and Nut** : Mild Steel Hot Dip Galvanize
Stainless Steel AISI 304 or AISI 316 Upon Request
- Lugs, Lifterbar** : Ductile Iron with epoxy powder coating protection
- Gasket** : The tapered gasket has an EPDM waffle pattern design

TECHNICAL DATA

- Size range** : DN50 - DN300
(Refer separate for higher range)
- Max operating Pressure** : 10 Bar for water
- Max temperature** : 60 deg C
- Body Length** : 200 mm
400 mm and 600 mm
available upon request
- No of Bolt** : 3

Note : Not provide for axial restraint

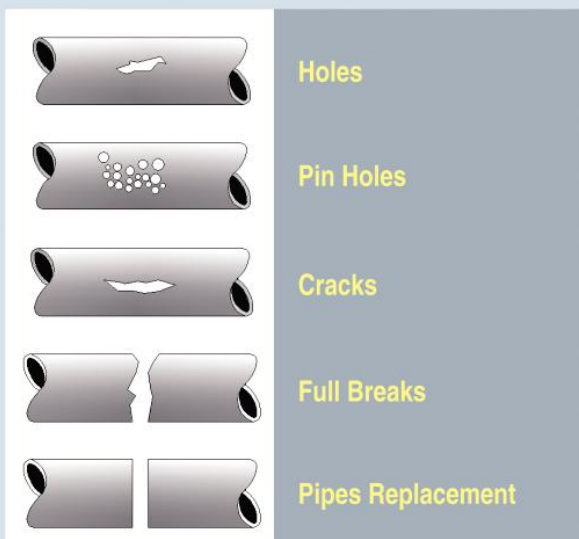


DIMENSIONS AND DETAILS

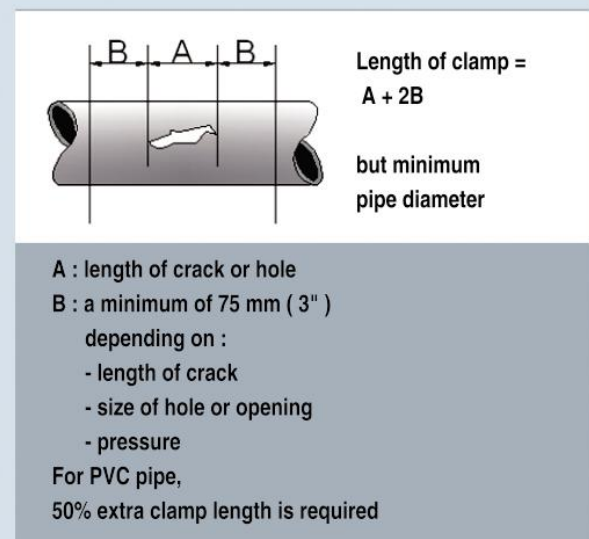
Stainless Steel Single Band Clamps

Nom. Pipe Size	Clamp Range MM	Approx Weight (Kg)	
		RD 1200	RD 1200 D
50 mm	60 - 70	1,90	3,60
65 mm	75 - 85	1,90	3,70
80 mm	85 - 95	2,00	3,80
80 mm	94 - 104	2,00	3,90
100 mm	105 - 115	2,10	4,00
100 mm	115 - 125	2,10	4,10
125 mm	145 - 155	2,20	4,15
150 mm	158 - 168	2,40	4,20
150 mm	168 - 178	2,40	4,30
175 mm	197 - 207	2,60	4,40
200 mm	215 - 225	3,20	5,00
200 mm	225 - 235	3,30	5,10
225 mm	250 -260	3,50	5,30
250 mm	270 - 280	3,80	5,60
250 mm	280 - 290	3,90	5,70
300 mm	320 - 330	4,40	6,20
300 mm	330 - 340	4,50	6,40

APPLICATION



CHOICE OF LENGTH





Distributed by :



PT.PASTI MAKMURKENCANA
Ruko Kemang Pratama
Jl. Kemang Pratama Raya blok MM - 3, Bekasi - 17116
P. +6221 - 82425511 F. +6221 - 82417261
www.pastimakmur.com
sales@pastimakmur.com

